

Walter Eco Systems



The reefs consist of multiple piling-mounted Eco Systems made in Gulf Shores, AL. Materials are thin concrete discs covered in Florida limestone rock and mounted on environmentally friendly composite pilings which are driven into the seabed. Three discs each 4ft in diameter are mounted on each piling and the individual reef structures are placed 10 - 20ft apart.

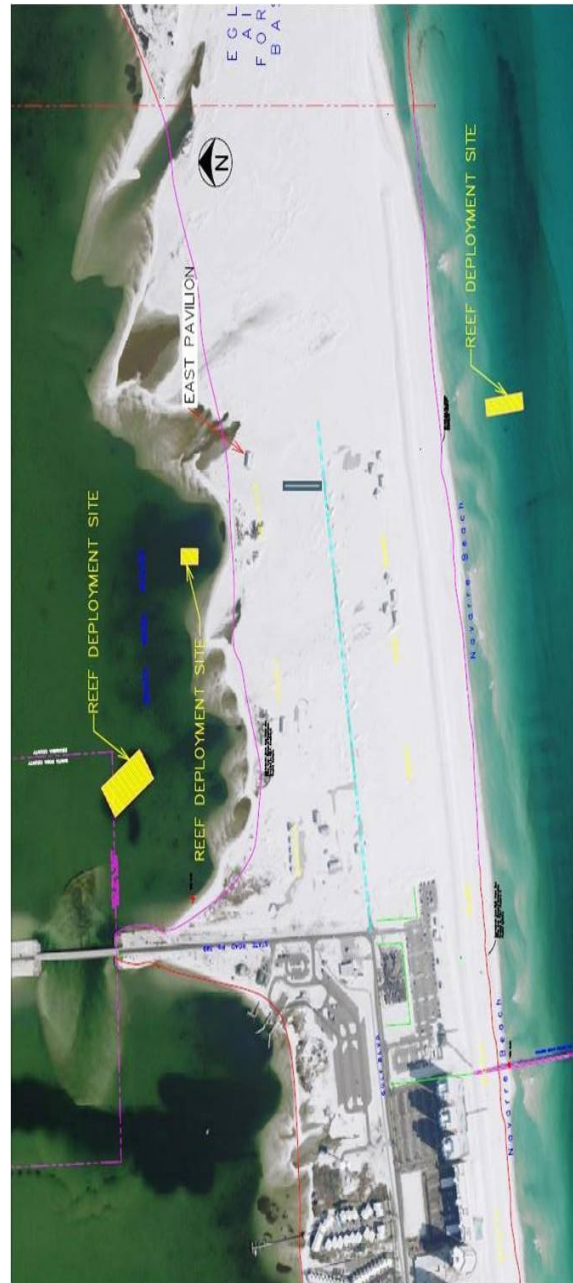
Our Mission

To promote the biodiversity of fish and marine invertebrates and protection of Navarre Beach and surrounding coastal habitats through the creation and maintenance of a near shore marine sanctuary.

The Navarre Beach Marine Sanctuary committee is part of the Navarre Beach Area Chamber of Commerce Foundation, a 501C3 non-profit charity 8668 Navarre Pkwy #142, Navarre FL 32566.

To adopt a reef structure or make a donation, visit our web site.

www.NavarreChamberFoundation.org



Navarre Beach County Park



www.NavarreBeachMarineSanctuary.com

MAKE NAVARRE SNORKELICIOUS Dive and Snorkel Navarre

This project created near shore artificial reefs in Santa Rosa Sound and the Gulf of Mexico off Navarre Beach. Our volunteers continue to inform the public about the economic, environmental, and educational benefits of reef programs and making Navarre Snorkelicious.

Near-shore reefs allow people of all skill levels to easily view marine life and ecosystems supported by the reefs. The Sound side reefs provide beginners a calm and protected area to learn and develop snorkeling and diving skills, while the Gulf side reef allows more advanced snorkelers and divers to view exotic marine wildlife by traveling only a few hundred feet offshore. These reef sites offer an easy and inexpensive option to increase your diving abilities or check out a new piece of equipment.

Gulf Side Reef

The Gulf site is located on the Gulf of Mexico 2,000ft east of the fishing pier directly south of the Sea Oat pavilion. This is the furthest southeast parking area of the park. Follow the boardwalk to the beach and immediately head east approximately 100ft. The site is marked (on shore only) by two large PVC posts positioned on the sand dune. The site is 340ft south of the mean tide line and consists of 30 structures in three columns of ten spaced 20ft apart and is ideal for snorkeling and diving for any skill level. The site is immediately beyond the second sand bar. Depths range from 9 - 15ft with tops at 6 - 10ft below the surface. Visibility ranges from 8 - 30ft depending on sea conditions. The site is adjacent to the public swimming beach. Expect to see a wide variety of marine life to include turtles and stingrays. Flag warning systems mark the water conditions.

Gulf Side layout placement

```
* * * * * * * * * *
* * * * * * * * * *
* * * * * * * * * *
```

West Sound Side Reef

The west sound side site is the largest of the three sites with a footprint approximately equal to a football field. To get to this reef, take the first left after entering the park. It is located directly north of Red Drum pavilion and the Navarre Beach Science Station. The site can be seen from the beach. This site is more conducive for diving than for snorkeling and is identified on all four corners by pilings and marked with ""SNORKELING REEF" "NO MOTORIZED VESSELS". At 700ft from shore this site consists of 77 structures spaced 10ft apart in 20ft of water with the tops of each structure at 14ft below the surface. Visibility ranges from 2 - 4ft in the summer, to 7 - 10ft in the winter. Water temperatures range from 65 - 85 degrees. Expect to see our resident sheepshead year round swimming in and out of the structures. We recommend a compass and flashlight at this site and buddy lines might be helpful.

West Sound Side layout placement

```
* * * * *
* * * * * * * * * * * * * * * * * * * * * * * *
* * * * * * * * * * * * * * * * * * * * * * * *
* * * * * * * * * * * * * * * * * * * * * * * *
* * * * * * * * * * * * * * * * * * * * * * * *
```

East Sound Side Reef

The east sound side reef is the smallest of the three sites located northwest of Sandpiper pavilion. This site is the most accessible of the three sites and is identified on all four corners with pilings marked with ""SNORKELING REEF" "NO MOTORIZED VESSELS". The site is about 150ft from shore and consists of 28 structures spaced 10ft apart in 12ft of water with the tops at 7ft below the surface.

East Sound Side layout placement

```
* * * * * * * *
* * * * * * * *
* * * * * * * *
* * * * * * * *
```

Visiting the Park

There are no fees to enter the park, hours are sunrise to sunset. Paved parking, restrooms, and fresh water showers are available at each pavilion. Because of the close proximity to swimming areas, spear fishing is not allowed.

The use of a diver down flag is recommended. Divers must make reasonable efforts to stay within 300ft of a diver down flag, and vessel operators must make a reasonable effort to maintain a distance of at least 300ft from diver down flags.